

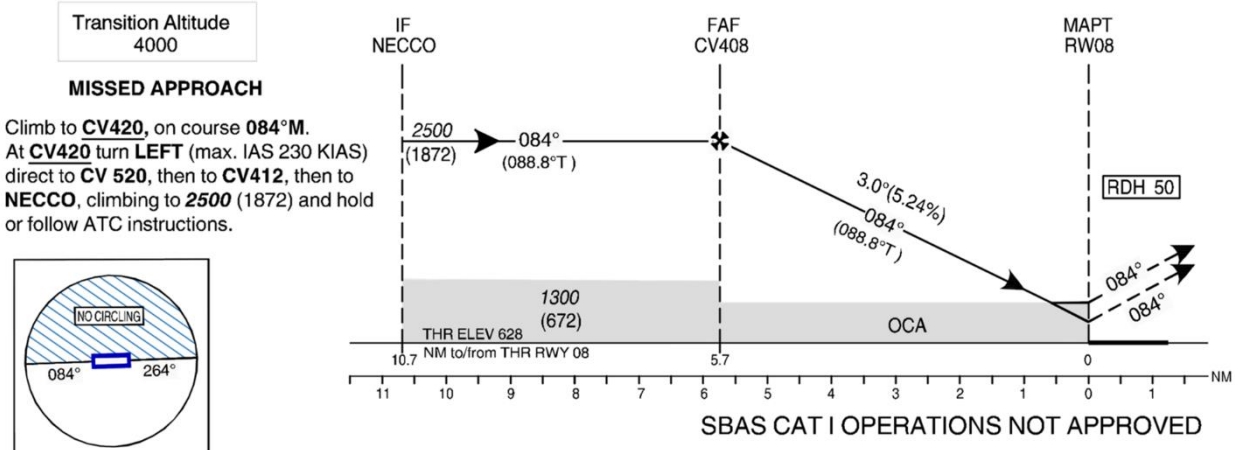
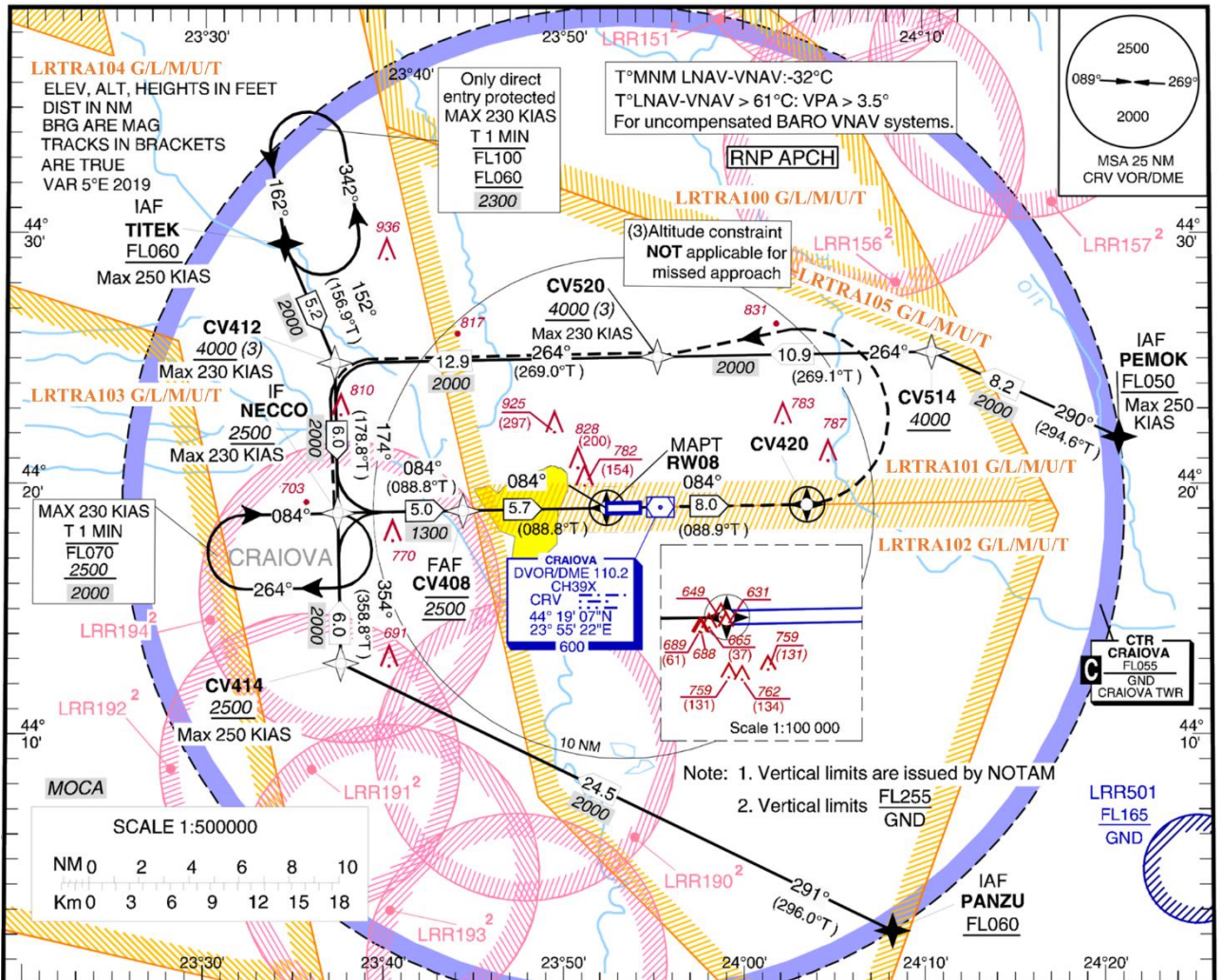
LRCV/ CRA
INSTRUMENT APPROACH CHART - ICAO

CRAIOVA, ROMANIA
RNP RWY 08

AERODROME ELEV. **628 ft**
HEIGHTS RELATED TO AD ELEV

EGNOS
CH 65241 E08A

GRANAT Tower **124.575**
GRANAT Tower ALTN **122.100**



OCA (H)	A	B	C	D	DL
LPV	794 (166)	807 (179)	839 (211)	849 (221)	
LNAV/VNAV	890 (262)	910 (282)	920 (292)	930 (302)	-
LNAV	1010 (382)				-
Circling*	1080	1130	1320	1320	-

Distance to RW 08	NM	5	4	3	2
Altitude (Height)	FT	2270 (1642)	1950 (1322)	1630 (1002)	1310 (682)

GS	KT	70	90	100	120	140	160
FAF MAPT 5.7NM	MIN:SEC	4:54	3:49	3:26	2:52	2:27	2:09
Rate of descent (5.24%)	FT/MIN	371	478	531	637	743	849

* Circling South of airport only. Timing not authorized for defining the MAPt. For data tabulation see verso

LRCV/ CRA

CRAIOVA, ROMANIA

RNP RWY 08

AERONAUTICAL DATA TABULATION

LNAV, LNAV/VNAV and LPV approach to RWY08	
Waypoint Identifier	Coordinates
CV408 (FAF)	44°18'57.9"N 023°44'24.0"E
CV412	44°24'51.4"N 023°37'15.3"E
CV414	44°12'51.6"N 023°37'37.2"E
CV420	44°19'13.0"N 024°03'30.8"E
CV514	44°25'17.8"N 024°10' 29.3"E
CV520	44°25'06.9"N 023°55'12.8"E
NECCO (IF)	44°18'51.5"N 023°37'26.2"E
PANZU (IAF)	44°02'12.0"N 024°08'13.0"E
PEMOK (IAF)	44°21'52.9"N 024°20'54.5"E
RW08 (MAPT)	44°19'04.57"N 023°52' 22.32"E
TITEK (IAF)	44°29'35.8"N 023°34'25.9"E

LRCV/ CRA

CRAIOVA, ROMANIA

RNP RWY 08

PROCEDURE CODING

Serial No	APP ID	Path Descriptor	Waypoint ID	Fly Over	Course °M(°T)	Magnetic Variation	Distance (NM)	Turn Direction	Altitude (ft)	Speed (kts)	V PA/TC H (°ft)	NAV SPEC
010	RNP08	IF	PEMOK			5.0E			+FL050	-250		RNP APCH
020	RNP08	TF	CV514		290 (294.6)	5.0E	8.2		+4000			RNP APCH
030	RNP08	TF	CV520		264 (269.1)	5.0E	10.9		+4000	-230		RNP APCH
040	RNP08	TF	CV412		264 (269.0)	5.0E	12.9		+4000	-230		RNP APCH
050	RNP08	TF	NECCO		174 (178.8)	5.0E	6.0		+2500			RNP APCH
010	RNP08	IF	PANZU			5.0E			+FL060			RNP APCH
020	RNP08	TF	CV414		291 (296.0)	5.0E	24.5		+2500	-250		RNP APCH
030	RNP08	TF	NECCO		354 (358.8)	5.0E	6.0		+2500	-230		RNP APCH
010	RNP08	IF	TITEK			5.0E			+FL060	-250		RNP APCH
020	RNP08	TF	CV412		152 (156.9)	5.0E	5.2		+4000	-230		RNP APCH
030	RNP08	TF	NECCO		174 (178.8)	5.0E	6.0		+2500			RNP APCH
010	RNP08	IF	NECCO			5.0E			+2500	-230		RNP APCH
020	RNP08	TF	CV408		084 (088.8)	5.0E	5.0		@2500	-185		RNP APCH
030	RNP08	TF	RW08	Y	084 (088.8)	5.0E	5.7		@678		-3/50	RNP APCH
010	RNP08	CF	CV420	Y	084 (088.9)	5.0E	8.0					RNP APCH
020	RNP08	DF	CV520			5.0E		L		-230		RNP APCH
030	RNP08	TF	CV412		264 (269.0)	5.0E	12.9			-230		RNP APCH
040	RNP08	TF	NECCO		174 (178.8)	5.0E	6.0		+2500			RNP APCH

LRCV/ CRA

CRAIOVA, ROMANIA

RNP RWY 08

LPV FAS DB

Input Data	
Parameters	Values
Operation Type	0
SBAS Provider	1 (EGNOS)
Airport Identifier	LRCV
Runway	08
Runway Letter	0 (None)
Approach Performance Designator	0
Route Indicator	
Reference Path Data Selector	0
Reference Path Identifier	E08A
LTP/FTP Latitude	441904.5720N
LTP/FTP Longitude	0235222.3150E
LTP/FTP Ellipsoidal Height (metres)	232.2
FPAP Latitude	441906.0750N
Delta FPAP Latitude (seconds)	1.5030
FPAP Longitude	0235415.1130E
Delta FPAP Longitude (seconds)	112.7980
Threshold Crossing Height	50.0
TCH Units Selector	0 (feet)
Glidepath Angle (degrees)	3.00
Course Width (metres)	105.00
Length Offset (metres)	0
HAL (metres)	40.0
VAL (metres)	50.0

Output Data	
Data Block	10 16 03 12 0C 08 00 00 01 38 30 05 F8 E9 04 13 56 C0 3E 0A 12 1D BE 0B 00 3C 71 03 F4 01 2C 01 64 00 C8 FA 0C 82 E2 2A
Calculated CRC Value	0C82E22A